

## 360 degree inspection system

The inspection system delivers fast, accurate inspection and traceability of cylindrical products, such as cans, bottles, jars, tubs, and vials. The unique multicamera OmniView technology does not require any orientation step in the production line to turn the label towards the camera.

**COGNEX**

**Weber**  
SYSTEMTECHNIK

# 360 degree inspection system

Typically consisting of the following components and software tools:

- GigE Camera technology and vision tools from Cognex
- WeSysExec user Interface simple, safe and fast for system parameter settings
- B&R industrial PC technology with Powerlink
- Ethernet interface to customer PLC and network



The inspection system offers 360° high-speed testing of non-oriented bottles, jars and other cylindrical containers.

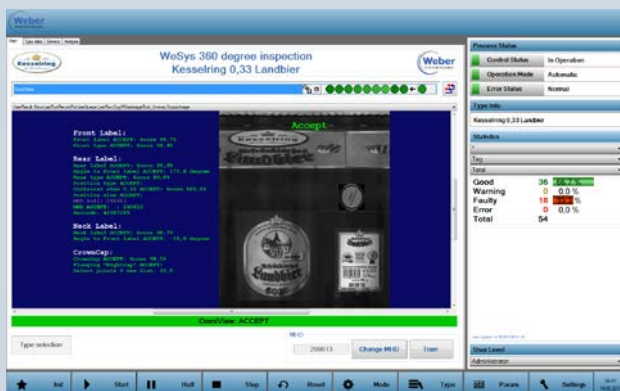
Products can be in any orientation as they pass through the OmniView station and the multiple cameras will acquire the image without having to slow the line. OmniView reads up to 1200 parts per minute.

## Benefits

- Minimization of product recalls with mismatched labels
- Control of the process by identifying defects at an early stage helps to obtain a higher quality of product and to protect the brand image
- Traceability of the product through the supply chain by ensuring that labels and ID codes are correct
- Providing a more effective use of labor by eliminating the need for manual inspection
- Inspection outside of the filling and labelling machine.

## Key Facts

- Cap position and skew
- Cap seal damage
- Label type, placement and skew
- Label damage
- Fill level
- Date and lot code
- Barcode and 2D symbol
- Mixed lot detection



The control software WeSysExec controls the complete vision system and acts as user interface for configuring the vision application.

- Type handling
- Statistics functionality
- Storing of images
- Operating status display

